



WATER-BORNE ROAD MARKING RESIN EAGACRYL 6050



EAGLE CHEMICALS™
RENEWS YOUR YOUTH LIKE THE EAGLE

EAGACRYL 6050

GENERAL DESCRIPTION

EAGACRYL 6050 is specially designed for road marking waterborne paints with fast drying speed and excellent outdoor durability.

ADVANTAGE OF ROAD MARKING PAINTS BASED ON EAGACRYL 6050

- Based on a all-acrylic resin, 100% pure acrylic, to promote a non-yellowing appearance after prolonged exposure to UV radiation
- The production of a paint with this resin provide a high speed drying time during the application (less time to release the automotive traffic after application) with good adhesion on road surfaces
- Environment friendly paints. Low VOC and APEO free. Paint formulations can be developed as low as 80 g/l VOC
- Ease to formulate different road marking paints
- Tracking resistance (balance of paint formula, application and glass beads)
- Early wash-off resistance with good dirt pick-up resistance
- Increase safety on roads
- Easy and safe cleanup (water, detergents or low boiling alcohols)
- Minimal disposal costs
- Compared with conventional waterborne traffic paints, this technology dries faster in high humidity, low temperature and poor air flow
- Good cost/performance balance

TYPICAL PROPERTIES

Test	Unit	Value	Deviation	Method
Solids content	%	50	±1.0	DIN 53 189/ISO 1625
Viscosity	cP	≤500		(ISO 2555; 23 °C) Brookfield RVT, sp 2, rpm 20 min-1
Wet Density	kg/l	1.03	±0.02	ISO 8962
Dry Density	kg/l	1.13	±0.02	ISO 8962
PH		10	±1.0	DIN 53 785 / ISO 1148
MFFT	°C	7	±1.0	MFFT instrument
Mean particle size	µm	0.06		Master Sizer 3000 from Malvern Company
Stabilization		Anionic		
Appearance		Viscous bluish/milk liquid		

GUIDE FORMULA

Raw Material	K.gm	Remarks
Water	139.59	
WD-EAGLE (AS4/40)	4.40	Eagle dispersing
Tetra potassium pyrophosphate	1.10	Wetting agent
Cellosize 100.000	1.77	Thickener
Proxel TN	1.32	Preservative
Ammonia	2.30	
Titanium dioxide	220.0	Crystal C128
EJSF	138.0	Calcium carbonate
Eagacryl 6050	477.0	Eagle Acrylic binders
Texanol	7.00	Coalescence aid
Anti foam GBR	1.32	
MPG	6.20	
Total	1000.0	

* These paints formulations are used in combination with glass beads on the surface during application.

EAGACRYL 6050

1- SAFETY FIRST

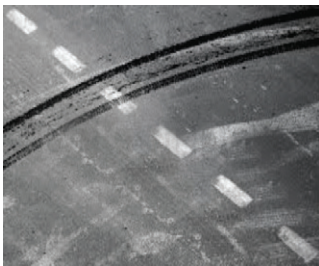
Night visibility is important



2- QUICK DRYING

Product	Set to Touch Dry	Tack Free Time	Dry Hard Time	Through dry Time
EAGACRYL-6050	<5 min	<5 min	<5 min	<5 min
Solvent based Acrylic Resin	<5 min	<5 min	<5 min	<5 min
Non-Quickset Technology Pure Acrylic Emulsion	<5 min	<5 min	<5 min	4:00 hrs
Non-Quickset Technology Styrene/Acrylic Emulsion	<5 min	<5 min	<5 min	4:30 hrs
Non-Quickset Technology	<5 min	<5 min	<5 min	4:30 hrs

3- TRACKING RESISTANCE

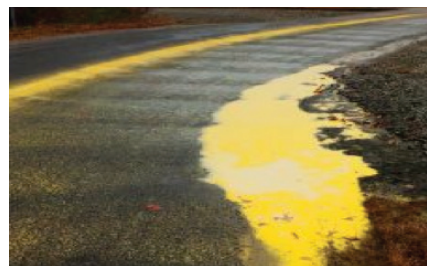


Tracking on the roadway is **unsightly** and **damaging** to the markings' performance



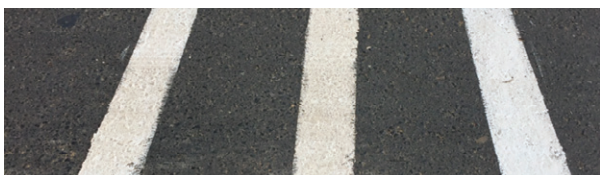
Paint splatter on cars can result in **costly claims** against the state

4- WASH-OFF RESISTANCE

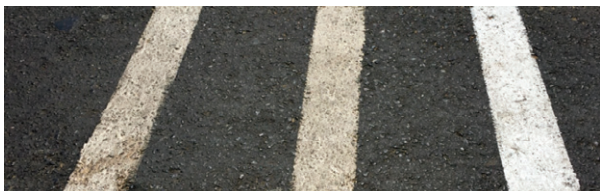


Unexpected rain events can cause significant problems when you don't have Quick Drying Technology

5- GOOD DURABILITY



After dried film



After 6 months

Solvent-based equivalent

Competitor

EAGACRYL-6050

EL Shark Company for Trade & Industry / Eagle Polymers Company

www.eagle-chemicals.com

Head Office

72 B/2, Hegaz St., Roxy, Cairo, Egypt
Tel: +20 2 22596601/2/9
Fax: +20 2 22596612
Gsm: +20 1000776659
Postal code: 1134

Customer Service Department

Tel: +20 2 22596601/2/9 - EXT: 107
Email: cs@eagle-chemicals.com

Logistics Department

Tel: +20 2 38202871/2 - EXT: 112
Email: Logistics@eagle-chemicals.com

Factories

**Solvent Borne Resins
& Acrylics + UPR plants**

Industrial Zone # 2, Part no.233,
6th October Egypt
Tel: +20 2 38202871/2
Fax: +20 2 38202481
Gsm: +20 12 86299222

Emulsion Resins plant

Engineering Square (E2)
Industrial Complex
North Extensions Industrial
Zone
Part NO# B4- H2- H4 H6
6th October, Egypt