



# ELASTOMERIC ROOF COATING C-EAGLE (SA27/50) 50%

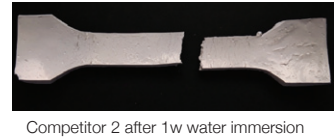
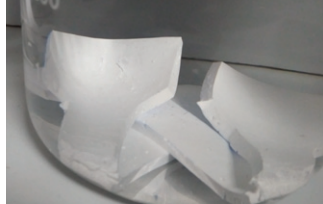
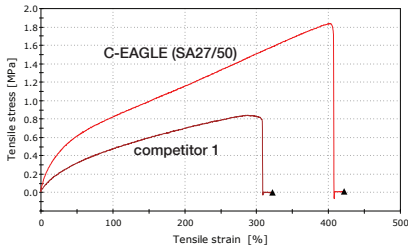


**EAGLE CHEMICALS™**  
RENEWS YOUR YOUTH LIKE THE EAGLE

# ELASTOMERIC ROOF COATING C-EAGLE (SA27/50) 50%

After 1 week dry + 7 days in water @25°C tested after 24 hrs. recovery at R.T.

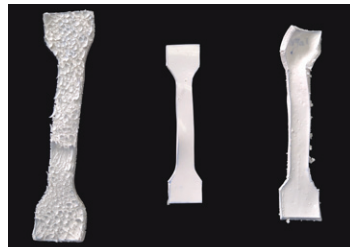
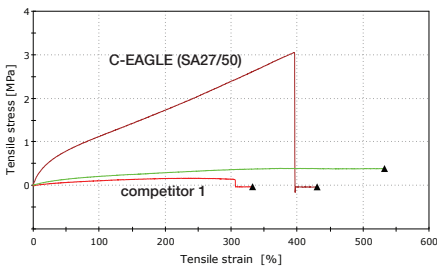
Parameters	C-EAGLE (SA27/50)	Competitor 1	Competitor 2
Tensile Strain @Strain 100% mean	0.862	0.483	The sample ruptured
Tensile Strain @Strain 200% mean	1.162	0.704	when immersed
Tensile Strain @Strain 300% mean	1.515	0.830	in water
% Elongation @ break mean	421	322	



Competitor 2 after 1w water immersion

After 1 week dry + 7 days in hot water @60°C tested after 24 hrs. recovery at R.T.

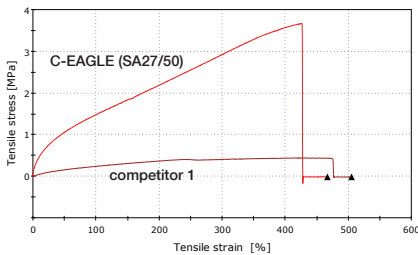
Parameters	C-EAGLE (SA27/50)	Competitor 1	Competitor 2
Tensile Strain @Strain 100% mean	1.131	0.215	The sample ruptured
Tensile Strain @Strain 200% mean	1.732	0.303	when immersed
Tensile Strain @Strain 300% mean	2.395	0.373	in water
% Elongation @ break mean	432	530	



Competitor 2 SA 27/50 Competitor 1

After 1 week dry + 14 days in hot water @60°C tested after 24 hrs. recovery at R.T.

Parameters	C-EAGLE (SA27/50)	Competitor 1	Competitor 2
Tensile Strain @Strain 100% mean	1.485	0.249	The sample ruptured
Tensile Strain @Strain 200% mean	2.196	0.378	when immersed
Tensile Strain @Strain 300% mean	2.926	0.414	in water
% Elongation @ break mean	4.66	5.04	



## Water resistance test after water immersion for 7 days

SA27/50 Competitor 1 Competitor 2 SA27/50 Competitor 1 Competitor 2



Competitor 1 Competitor 2 SA27/50



Competitor 1 SA27/50 Competitor 2

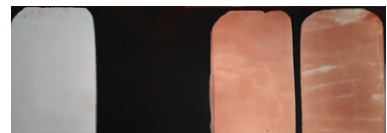


## Dirt pick up resistance test after 1 week curing

SA27/50 Competitor 1 Competitor 2



SA27/50 Competitor 1 Competitor 2



# ELASTOMERIC ROOF COATING C-EAGLE (SA27/50) 50%

**C-EAGLE (SA 27/50) 50%** is a specially designed styrene acrylic emulsion resin that has excellent balance of tensile strength and elongation at break, as shown by testing on Instron universal tensile testing machine. In addition to that, C-EAGLE (SA 27/50) 50% has excellent water and dirt pick up resistance and stable in extreme weather conditions.

## SPECIFICATIONS

	NV	MFFT $\pm 1$	PH @23°C	Viscosity @23°C	Density @23°C	Water Absorption
<b>C-EAGLE(SA27/50)</b>	50%	2°C	7.5 - 9.5	2000 - 4000 cP	1.04 $\pm$ 0.02 Kg/L	8.3%

## GUIDE FORMULA

Ingredients	Wt. %	Function	Supplier
<b>PART 1: Mix well the below ingredients at 500 rpm for 10 minutes</b>			
1-Water	195.60		
2- Tetra potassium Pyrophosphate	1.00	Wetting agent	Continental group
3- WD-EAGLE (AS4/40)	3.0	Dispersing Agent	Eagle Chemicals
4- Dispelair CF 900	3.0	Defoamer	MIDI-chemicals
5- Natrosol HBR 30.0000	3.0	Thickener	Ashland
6- Ammonia	1.5		
<b>PART 2: Grind the below ingredients at 3000 rpm for 30 minutes</b>			
7- TIONA 128	210.0	White pigment	Cristal
<b>PART 3: Mix well the below ingredients at 1000 rpm for 15 minutes</b>			
8- C-EAGLE (SA27/50) 50%	570.0	Binder	Eagle Chemicals
9- NX795	10.0	Coalescence aid	Perstorp
10- Acticide HF	2.90	Preservatives	Thor
TOTAL	1000.0		

N.B. The DFT should be approx. 2.5 mm - keep to dry for at least 1 week

## TESTING PROCEDURES and results for Instron universal tensile testing machine

According to ASTM D412 - Apply the coat in 3 mm thickness mold and cure for 7 days at 23°C and 50% RH (The dry film thickness should be between 1.3 - 3.3 mm)



Prepare the sample to be ready for testing

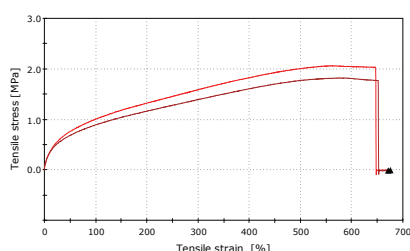


Test the samples for elongation and tensile strength at speed 500 mm/min in **Instron universal tensile testing machine**

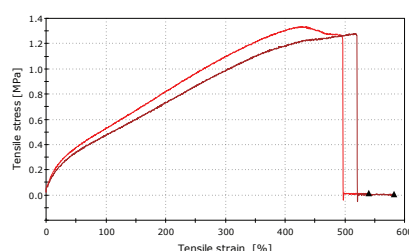


### Test 1 - After 1 week dry @25°C

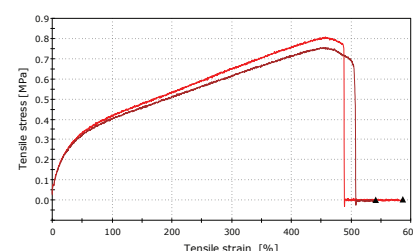
Parameters	C-EAGLE (SA27/50)	Competitor 1	Competitor 2
Tensile Strain @Strain 100% mean	0.954	0.506	0.410
Tensile Strain @Strain 200% mean	1.245	0.779	0.522
Tensile Strain @Strain 300% mean	1.493	1.041	0.632
% elongation @ break mean	671	560	563



C-EAGLE (SA27/50)



Competitor 1



Competitor 2

**EL Shark Company for Trade & Industry / Eagle Polymers Company**

[www.eagle-chemicals.com](http://www.eagle-chemicals.com)

**Head Office**

72 B/2, Hegaz St., Roxy, Cairo, Egypt  
Tel: +20 2 22596601/2/9  
Fax: +20 2 22596612  
Gsm: +20 1000776659  
Postal code: 1134

**Customer Service Department**

Tel: +20 2 22596601/2/9 - EXT: 107  
Email: [cs@eagle-chemicals.com](mailto:cs@eagle-chemicals.com)

**Logistics Department**

Tel: +20 2 38202871/2 – EXT: 112  
Email: [Logistics@eagle-chemicals.com](mailto:Logistics@eagle-chemicals.com)

**Factories**

**Solvent Borne Resins  
& Acrylics + UPR plants**

Industrial Zone # 2, Part no.233,  
6th October Egypt  
Tel: +20 2 38202871/2  
Fax: +20 2 38202481  
Gsm: +20 12 86299222

**Emulsion Resins plant**

Engineering Square (E2)  
Industrial Complex  
North Extensions Industrial  
Zone  
Part NO# B4- H2- H4 H6  
6th October, Egypt